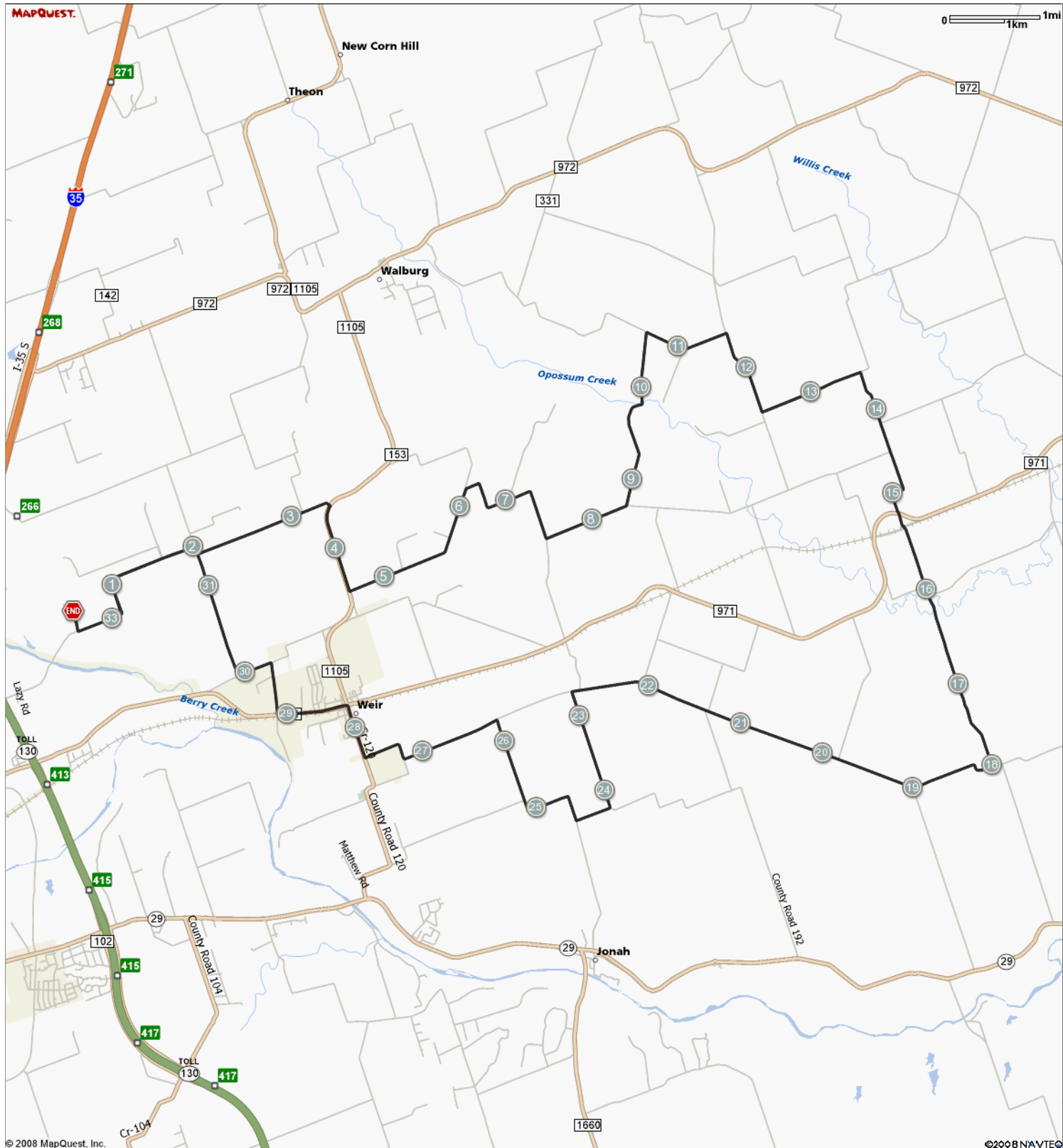


ROUTE DESCRIPTION:
No Description Provided



ROUTE DESCRIPTION:
 No Description Provided

Notes		
AT	FOR	NOTES
0.23 mi.		9,705 ft. Turn left at Highway 152
2.07 mi.		423 ft. Turn right at Highway 140
2.15 mi.		8,184 ft. Turn left at Highway 149
3.7 mi.		4,802 ft. Turn right at 1105
4.61 mi.		9,486 ft. Turn left at Highway 153
6.41 mi.		7,466 ft. Turn right at Highway 156
7.82 mi.		4,901 ft. Turn left at Highway 327
8.75 mi.		9,957 ft. Turn left at Highway 328
10.63 mi.		5,015 ft. Turn right at Highway 329
11.58 mi.		4,792 ft. Turn right at Highway 320
12.49 mi.		6,053 ft. Turn left at Highway 327
13.64 mi.		4,620 ft. Turn right at Highway 326/ Highway 327 Continue to follow Highway 327
14.51 mi.		3,936 ft. Continue on Highway 380
15.26 mi.		843 ft. Continue on County Road 380
15.42 mi.		13,986 ft. Turn right at Highway 340
18.07 mi.		5,030 ft. Turn right at Highway 124

Notes		
AT	FOR	NOTES
19.02 mi.		20,734 ft. Turn right to stay on Highway 124
22.95 mi.		6,585 ft. Turn left at Highway 127
24.19 mi.		2,090 ft. Turn right at Highway 191
24.59 mi.		1,388 ft. Turn right at Highway 126
24.85 mi.		7,637 ft. Turn left to stay on Highway 126
26.3 mi.		5,734 ft. Turn left at Highway 124
27.39 mi.		2,922 ft. Turn right to stay on Highway 124
27.94 mi.		2,958 ft. Turn right at Highway 120
28.5 mi.		4,086 ft. Turn left at 971
29.27 mi.		2,814 ft. Turn right at N Towns Mill Rd
29.81 mi.		2,058 ft. Turn left at Highway 194
30.2 mi.		7,342 ft. Turn right at Highway 140
31.59 mi.		9,703 ft. Turn left at Highway 152
33.42 mi.		1,009 ft. Turn right
33.61 mi.		- Stop